







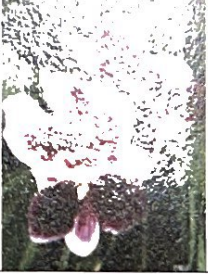

Chadwick's Orchid Care Instructions

Genera	Cattleya (Corsage Orchid)	Dendrobium (Hawaiian Lei)	Oncidium (Dancing Lady)	Paphiopedilum (Lady Slipper)	Phalaenopsis (Moth Orchid)
Culture					
Bloom Duration & Season	Standards 2-3 weeks, miniatures one month. Same bloom time each year.	Approximately 2 months. Random bloom seasons.	Approximately 4-6 weeks. Random bloom seasons.	Approximately 2 months. Random bloom seasons.	Approximately 3 months. Blooms January through May. (Unless forced)
Light Requirements	Filtered direct (Full sun diffused by sheer curtains, partially turned blinds, or outside under a trellis).	Filtered direct (Full sun diffused by sheer curtains, partially turned blinds, or outside under a trellis).	Filtered direct (Full sun diffused by sheer curtains, partially turned blinds, or outside under a trellis).	Indirect (Shade or early morning/late day sun).	Indirect (Shade or early morning/late day sun).
Potting Medium	Sphagnum moss for 4 in clay pots or less. Cypress mulch for 5 in clay pots or larger.	Fir Bark in a clay pot.	Sphagnum moss for 3 in clay pots or less. Cypress mulch for 4 in clay pots and larger.	Mixture of coconut husks, expanded clay pellets, and charcoal in plastic pot.	Sphagnum moss in clay or plastic pots.
Temperature	58- 90 degrees F.	65- 90 degrees F.	60- 90 degrees F.	60- 90 degrees F.	65- 90 degrees F. 50 degrees in fall for 3 weeks to encourage spiking.
Water	Once or twice a week, thoroughly.	Once or twice a week, thoroughly.	Once or twice a week, thoroughly.	Never let dry out between watering. Water twice a week thoroughly.	Water when media is almost dry, once or twice a week. Avoid water in the crown.

Greenhouse: (804) 598-7560 1240 Dorset Rd. Powhatan, VA 23139
 Retail Store: (804) 359-6724 203 N. Belmont Ave. Richmond, VA 23221

Greenhouse@Chadwickorchids.com
 Belmont@Chadwickorchids.com

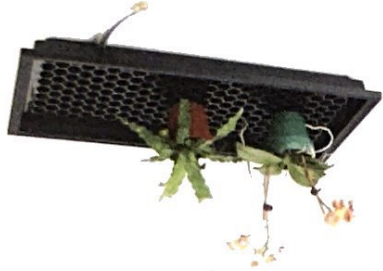
Chadwick's Orchid Care Instructions (Tricky Types)

Genera	Culture	Bloom & Duration	Light Requirements	Potting Medium	Temperature	Water
Cymbidium		Approximately 6-8 weeks. Blooms in the winter.	Filtered direct (Full sun diffused by sheer curtains, partially turned blinds, or outside under a trellis).	Mixture of coconut husks, expanded clay pellets, and charcoal in plastic pot.	Upper 30's-90 degrees F. 60 degrees F while budding.	Should be kept moist in the summer. In winter they should go dry between watering.
Miltonia (Pansy Orchid)		Approximately 4-5 weeks. Blooms in the spring.	Indirect (Shade or early morning/late day sun).	Mixture of fir bark, expanded clay pellets, peat moss and charcoal in plastic pot.	Should not exceed 80 degrees F.	Once or twice a week, thoroughly.
Vanda		Approximately 4-6 weeks. Blooms spring-summer.	Filtered direct (Full sun diffused by sheer curtains, partially turned blinds, or outside under a trellis).	No potting medium necessary. Can be placed in a basket with cork.	60-90 degrees F.	Daily, in the morning.

Use fertilizer sparingly because orchid roots are sensitive. Weak solutions applied several times a month are usually sufficient.



For smaller collections, humidity trays work well. For larger collections a small humidifier may be necessary.



Insufficient humidity levels are often the cause of buds falling off. Strive for at least 50% humidity year round.

Common orchid pests:

Mealy bug, Scale, & Mites

Spray leaves until dripping.



Repeat in 7-10 days.